

a *fresh* APPROACH

TO LIFE-CHANGING WELLNESS



DAVID LAWRENCE CENTER
Restoring & Rebuilding Lives

Annual Report 2013-2014

hope

David Lawrence Center is dedicated to continuous improvement, innovation and advancement. Our fresh approach to life-changing wellness instills hope, health and healing through a holistic treatment philosophy centered on the most innovative treatment methods available. This breathes new life into our programs and has our clients looking up where the sky is the limit on their potential.

table of contents

- 2** Programs and Services
- 3** Executive Letter
- 4** Strategic Initiatives
- 5** Fiscal Year End Data
- 6** Financials
- 7-9** Success Stories
- 10-14** Partners, Volunteers and Donors

about US

programs & services

Admission Services

Access services with no appointment necessary

- Walk-in Clinic
- Same Day Clinical Assessments
- Crisis Support
- Emergency Services

Inpatient Crisis Stabilization Services

- 24/7 intensive treatment programs with variable lengths of stay
- Adult Crisis Stabilization Unit
- Baker Act Receiving
- Children's Crisis Stabilization Unit

Crossroads Adult Substance Abuse Services

- Residential Treatment
- Detoxification Unit
- Intensive Outpatient Services
- Partial Hospitalization Program
- Ongoing Supports

Outpatient Services

- Individual and Family Therapy
- Group Therapy
- Medication-Assisted Therapy
- Psychiatric Medical Services
- Substance Abuse Intervention
- Telemedicine and Telehealth

Community Services

Provided in the community setting – home, schools, businesses, healthcare facilities, human services agencies – to divert at-risk clients from restrictive institutional care, further decompensation or legal involvement

- Case Management
- Children's Community Services
- In-home Services
- Parenting Classes
- School-based Services
- Prevention Services
- Homeless Outreach
- Affordable Housing
- Supported Living Services
- Supported Employment

Specialty Services

Services provided in conjunction with the courts to give clients with legal involvement access to appropriate mental health and substance abuse services

- Juvenile Assessment Services
- Mental Health Court
- Drug Court
- Deferred Prosecution
- Forensic Reintegration Support

Holistic Therapies and Complementary Services

Wellness-based additional services that treat the whole person and work in conjunction with traditional behavioral health treatment

- Art Therapy
- Equine Facilitated Psychotherapy
- Music Therapy
- Pet Therapy
- Tobacco Cessation Services
- Wellness and Nutrition
- Yoga and Structured Fitness

Affiliates

- Child's Path Preschool
- Encore Resale Shop

Treatment Team

Services are provided by a multidisciplinary, multilingual expert treatment team consisting of board certified child, adult, adolescent and geriatric psychiatrists, addictionologists, nurses, clinicians, case managers, mentors, therapists, peer support specialists and behavioral health technicians when clinically indicated.

David Lawrence Center is the Southwest Florida-based, not-for-profit leading provider of behavioral health solutions dedicated to inspiring and creating life-changing wellness for every individual. The Center provides innovative and comprehensive inpatient, outpatient, residential and community based prevention and treatment services for the one in four local children and adults who experience mental health, emotional, psychological and substance abuse challenges.

mission

Restoring and rebuilding lives by providing compassionate, advanced and exceptional mental health, substance abuse and integrated healthcare solutions, available to all.

vision

To lead the way in transformational care so every individual assisted can achieve what is possible.





David Lawrence Center

BOARD OF DIRECTORS 2014-2015

Scott Burgess
Chief Executive Officer

Douglas Johnson, PhD
President

Arthur Cherry
Catherine Fay
Jack Fingersh, Esq.
Polly Keller*
Shaun Kelly, CPA*
Brian V. McAvoy, Esq.
Daniel A. Mendoza, CIMA®
Robert Morantz, M.D.
William O'Neill, Esq.
L. Patt Schneider, PhD
Viola Steffan
Pablo X. Veintimilla
James Warnken, CPA
Gail Webster *
Lieutenant George Welch

* Honorary Board Member

David Lawrence Foundation

BOARD OF TRUSTEES 2014-2015

Scott Burgess
Chief Executive Officer

Arthur Cherry
Chairman

John Bobb
William O'Neill, Esq.
Daniel A. Mendoza, CIMA®



executive LETTER

Dear Supporters:

The David Lawrence Center's fiscal year 2013-2014 was a transformational year of dynamic growth and advancement of mission-critical services. We accomplished this during a transition of CEO leadership with continued challenges associated with global healthcare changes and during a slowly recovering economy.

We assisted almost 1,000 more individuals this year compared to last year. We provided mental health care and/or substance abuse treatment services to 8,592 individuals, with 30% of these services provided to children. The recent expansion to our Crisis Stabilization units allowed us the ability to provide immediate and intensive crisis support to almost 1,200 individuals, an increase of more than 275 persons over last year. Additionally, our outpatient psychiatry evaluations and medication management appointments saw double digit growth.

In addition to the expanding services, DLC continues to provide the highest levels of quality and safety of care. Consistently committed to providing the utmost standard of treatment, client satisfaction exceeded 96% and DLC's exemplary quality service was recognized through numerous external reviews and national awards including once again achieving the gold seal of approval and reaccreditation by the Joint Commission.

We are very pleased with our results and successes, and we remain vigilant in our pursuits to constantly strive to meet the growing needs in our community. With 1 in 4 individuals being impacted by mental health challenges, and 1 in 9 struggling with a substance abuse issue, it is clear that so much more needs to be done to bring health, healing and hope to Southwest Florida.

To this end, the DLC Board of Directors, Foundation Board, Executive leadership and staff have completed a five-year Strategic Plan which provides the vision for our future, our priority areas and the framework needed to realize this vision.

We sincerely thank you for your support which has allowed us to continue to make such an amazing impact in our community. Together we are saving lives and changing lives, thousands of lives, each year and we are honored to have your partnership in this most vital mission.

Scott Burgess
CEO
David Lawrence Center

Pablo X. Veintimilla
President
David Lawrence Center
Board of Directors

Arthur Cherry
Chairman
David Lawrence Foundation
Board of Trustees

C-HOPE

Seeing Hope Through a New Vision.

David Lawrence Center's Board of Directors and staff have developed a new five-year strategic plan that provides a framework of priorities, initiatives and objectives established to broadly address community needs through 2020. This plan is designed to exceed the highest quality of care expectations that will help our clients see hope, visualize their potential and transform their lives.



C - CHILDREN

- Focus on early identification, screening, assessment
- Implement early intervention, evidence-based treatments
- Develop new children's intensive services programs
- Head pediatric behavioral health in Southwest Florida and beyond

H - HOLISM

- Integrate physical and mental health care
- Develop comprehensive wellness strategies (nutrition, exercise, spirituality)
- Develop a formal strategy to assist in addressing the need for more affordable, supported housing

O - ON-GOING INNOVATION

- Continue growing clinical innovations
- Seek and implement new technology innovations

P - PARTNERSHIPS THAT ENGAGE & EMPOWER

- Engage partners in healthcare, social services, academics, business, faith-based organizations, etc.
- Assist in advancing state and national advocacy efforts
- Develop a robust clinical training program (interns, residents)
- Grow professional staff development initiatives/opportunities to engage, retain and grow future clinical and administrative DLC leaders

E - ENHANCED ACCESS TO CARE

- Expand facilities to serve more children, adults and seniors in need
- Invest in new technologies such as telehealth and telepsychiatry
- Utilize strategic partnerships to increase access to care

For a copy of the strategic plan or to schedule a tour of the David Lawrence Center Campus, please contact Aaron Lapp, Director of Development at aaronl@dlcmhc.com or 239-354-1419.

2013-2014

fiscal Year in Review

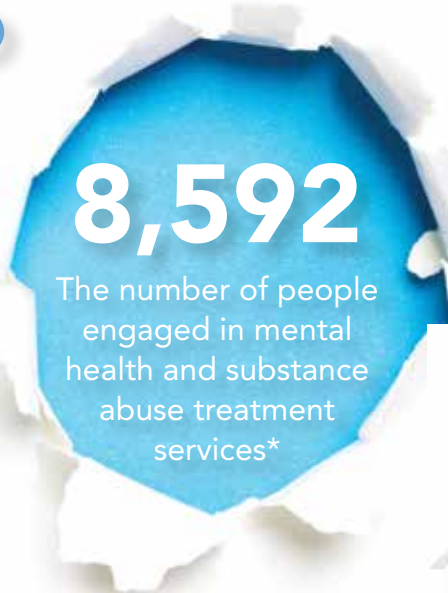


50%

Nationally, the percentage of children with a social emotional condition who go without care

76%

Percentage of people that require governmental or charitable subsidy



8,592

The number of people engaged in mental health and substance abuse treatment services*



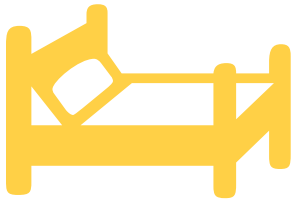
291
Number of David Lawrence Center Employees



49,034
Visitors to the David Lawrence Center website



24
Affordable housing units for qualified individuals with a diagnosed mental illness



28
Crisis Unit Beds

33
Crossroads Residential and Detox Beds

2,595
Number of people who received clinical assessments in Admission Services



2,000,000
adolescents attempt suicide in America annually

535,000

Number of people in Florida suffering from mental illness who are uninsured



49th
The ranking of Florida in per capita state spending for mental health treatment



4051
Number of DLC and Encore Facebook Fans

32%

Growth in the number of adults seen in individual outpatient therapy

49,985
Number of people served in outreach, prevention and information and brief triage services**



180,285
Total number of services provided to children and adults

*unique clients served in ongoing treatment programs
** duplication is possible

financials

DAVID LAWRENCE CENTER INCOME STATEMENT

REVENUE

State Contracts	\$ 8,364,717
County	\$ 1,385,040
Net Client Fees and Insurance	\$ 6,410,275
Donations	\$ 1,338,404
Grants and Other	\$ 935,781
Total Revenue	\$ 18,434,217

EXPENSES

Adult Mental Health	\$ 8,296,676
Adult Substance Abuse	\$ 4,424,894
Children's Mental Health	\$ 3,687,412
Children's Substance Abuse	\$ 2,028,076
Total Expenses	\$ 18,437,058

Operating Net Income (Loss) \$ (2,841)

BALANCE SHEET

Total Current Assets	\$ 3,999,284
Net Fixed Assets	\$ 10,305,667
Total Other Assets	\$ 49,000
Total Assets	\$ 14,353,951
Total Liabilities	\$ 2,198,471
Total Equity	\$ 12,155,480
Total Liabilities and Equity	\$ 14,353,951

Data excerpted from audited financial statements of the David Lawrence Center ending 6/30/14.

DAVID LAWRENCE FOUNDATION INCOME STATEMENT

REVENUE

Donations	\$ 436,378
Special Event Net Income	\$ 431,812
Other Revenue	\$ 23,310
Operating Revenue	\$ 891,500

Investment (Gain) \$ 660,568

EXPENSES

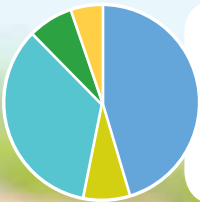
Operating Donations to DLC	\$ 1,413,022
Fundraising	\$ 13,854
Management and General	\$ 57,315
Prior Period Reclassification	\$ 400,000
Total Expenses	\$ 1,884,191

Changes in Net Assets (Loss) \$ (332,123)

BALANCE SHEET

Property and Equipment	\$ 444,688
Investments	\$ 5,048,311
Other	\$ 1,126,261
Total Assets	\$ 6,619,260
Total Liabilities	\$ 23,801
Total Fund Balance	\$ 6,595,459
Total Liabilities and Equity	\$ 6,619,260

Data excerpted from audited financial statements of the David Lawrence Foundation ending 6/30/14.



REVENUE

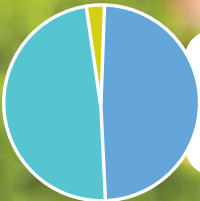
- 45% - State Contracts
- 35% - Net Client Fees and Insurance
- 8% - County
- 7% - Donations
- 5% - Grants & Other



EXPENSE

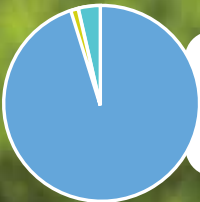
- 45% - Adult Mental Health
- 24% - Adult Substance Abuse
- 20% - Children's Mental Health
- 11% - Children's Substance Abuse

DAVID
LAWRENCE
CENTER



REVENUE

- 49% - Donations
- 48% - Special Event-Net Income
- 3% - Other Revenue



EXPENSE

- 95% - Operating Donations to DLC
- 4% - Management & General
- 1% - Fundraising

DAVID
LAWRENCE
FOUNDATION



A'LLAWNA

A'llawna is a 9-year-old self-proclaimed "diva" with a sweet disposition that can turn with the blink of an eye. What began as tantrums eventually turned into something much more problematic.

Her mother, Althea, assumed parental rights of A'llawna at birth from a woman she had fostered as a child. She saw warning signs she had seen in A'llawna's mother and took her to a child psychiatrist at the David Lawrence Center when she was only four.

A'llawna struggled with impulse control and anger due to oppositional defiant disorder and ADD. Althea adds, "Uncontrollable rage caused her to punch a teacher and destroy a classroom in mere seconds."

A'llawna had an IQ in the 99th percentile but was in and out of special education classrooms while being medicated and undergoing in-home therapy.

Nothing helped, Althea recalls. "Calling the cops on my young daughter and sending her to the Crisis Stabilization Unit repeatedly was unbearable. In one of the instances, after she tried to destroy mailboxes with her Hello Kitty guitar, they handcuffed her in front of the house and threatened to Taser and pepper spray her."

Althea feared she was no longer capable of caring for A'llawna, but her prayers were soon answered by the new DLC Community Action Team, a mentoring and treatment program designed to divert at-risk youth from the child welfare and juvenile justice systems and institutional care.

The team worked with the schools to challenge her educationally. Althea was empowered to take control of situations in a way which helps A'llawna feel safe. A behavior chart helped motivate A'llawna to work to achieve rewards or suffer consequences. She was also assigned a Collier County Sheriff's Office Juvenile's at Risk (JAR) officer who Althea may call for help.

Althea now has the parenting tools she needs to manage A'llawna's behavior. Her therapist adds, "They have calm and respectful conversations including better self-expression using words instead of negative actions while savoring the joys childhood brings."



"The team approach is very helpful. Within the first few weeks in the program, we were all on the same page. She has a great relationship with her mentors and I know I can call on them day or night when and if I need help."

— ALTHEA, A'LLAWNA'S MOM

children Served by Program*

1,593

Admission & Outpatient Services

1,072

Medical Services

874

Community Services

289

Emergency Services

226

Inpatient Services

*Duplication among program type is possible

CHILDREN'S SERVICES PROGRAM ENHANCEMENTS 2013 - 2014

- Launched the New Children's Mental Health First Aid Prevention Program
- Secured a Grant from the Harmon Meek Gallery Fund of SW FL Community Foundation to Launch a new Art Therapy Program for the Children's Community Action Team
- Secured a Grant from the Glitter Foundation to Launch a new Children's Crisis Unit Art Therapy Program
- Added a New Children's Psychiatrist and Expanded Integrated Psychiatric Services in Immokalee Through Funding from the NCEF Beautiful Minds Initiative



RON



“I’ve learned to manage my stress. I don’t isolate and I know I have people I can talk to when I have an issue. If I feel myself going manic, I get busy cleaning or putting a computer back together.”

– RON

Ron struggled growing up in New Jersey with his father in jail and his mother having a hard time making ends meet with three kids.

At age 16, he developed an intense fear of school and refused to go for months.

At 18, when thoughts of suicide overwhelmed him, his family took him to a crisis stabilization unit where he was treated for depression and adjustment disorder. Therapy and medication helped but for just a short while.

He bounced from job to job and town to town winding up in Cape Coral. He first went homeless at age 19 and each time thereafter was worse than the first. The more desperate the situation, the more suicidal he became.

Ron shares, “I tried to cheer up by decorating for Christmas, but after making a noose out of the lights I knew I needed help.” He checked himself into a crisis stabilization unit where he was diagnosed with bipolar disorder.

After discharge, he moved to Naples but without a plan – no job or transportation or place to live. He began drinking, went off his meds, and knew again he needed help. So he came to the David Lawrence Center Crisis Stabilization Unit where his plea was answered.

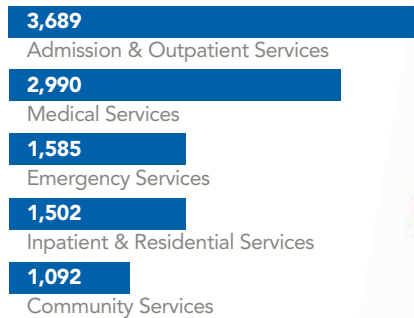
After being stabilized, he was referred to St. Matthew’s House for housing and into DLC’s Project for Assistance in Transition from Homelessness (PATH) Program.

His PATH coordinator helped Ron enroll at FGCU in the software engineering program. Together they secured financial aid and campus housing.

In eight short months, Ron went from cycling in and out of crisis units and living on the streets to being a full time college student with permanent housing. Stable and sober, he now has the skills and support he needs to manage his illness along with a plan for a bright future.

Ron credits DLC for putting his life back together. “No one else ever did so much to help me.”

adults Served by Program*



*Duplication among program type is possible

ADULT SERVICES PROGRAM ENHANCEMENTS 2013 - 2014

- Added a New Rehabilitation Specialist to the Crisis Unit to Enhance Group Therapy and Daily Activities
- Expanded Forensic Reintegration Support Services Through a Department of Children and Families Grant
- Launched the Adult Mental Health First Aid Prevention Program
- Renovated and Enhanced Admission Services

KAREN

Karen, a 70-year-old mother and grandmother, was trapped in an unhappy marriage for 51 years and was drinking to cope.

She married right out of high school to escape her parents' strict upbringing and verbal abuse. She did not drink but says her husband became a binge-drinker. "Watching him made me never want to drink."

After raising three children in Kentucky, they moved to Naples where she began a mortgage lending career. Karen started drinking during networking events recalling "it gave me confidence to talk to people." The more successful she became at work, the more strained her marriage became.

She wanted to uphold her vows and her husband convinced her she was nothing without him, so she stayed in a loveless marriage for 18 more years and drank to numb her feelings.

When the drinking became noticeable, she hid it by drinking in the car. Her children found the bottles and staged two interventions in four years. She stopped drinking on her own for a short time but then one day, drinking in the car, she slammed into her garage damaging the car and house and fracturing her nose. While she was against it, her kids brought her to the David Lawrence Center Crossroads Detox and she's been sober ever since.

After 10 days in Detox, Karen transferred into the Crossroads Residential program where she learned to understand her addiction and how to live without alcohol as a crutch.

With her newfound sobriety and coping skills, she ended her toxic marriage and accepted a leadership position with a nonprofit agency.

Now Karen volunteers at Crossroads, sharing her strength, hope and courage and her own "Recovery Binder" design. To date, she has donated enough materials to make 400 binders for others. She affirms,



"I have come full circle in my journey and have no desire to drink."

Karen is living proof that you should never give up hope and it's never too late to start over and find happiness.

"They taught me it is okay to feel bad and disappointed. I began to understand that I used alcohol to avoid those feelings. They guided me to find solutions instead."

– KAREN



SUBSTANCE ABUSE PROGRAM ENHANCEMENTS 2013 - 2014

- Completed Construction on the Crossroads Fitness Court
- Expanded Services Available to Pregnant and Postpartum Women with Substance Abuse Disorders
- Added Tobacco Cessation Groups to Crossroads Residential Program
- Piloted Medication-Assisted Substance Abuse Treatment
- Developed New More Effective Detox Protocols
- Partnered with the Shelter for Abused Women and Children to Launch Onsite Substance Abuse Counseling through a Florida Coalition Against Domestic Violence Grant
- Launched a New Family Program at Crossroads Residential

Support



PARTNERS

CORPORATE PARTNERS

Arthrex, Inc.
 Branch, Banking & Trust (BB&T)
 Brown & Brown Benefits
 Bua Bell Group, John R. Wood Realtors
 Escapes Paris
 Florida Blue
 Florida Weekly
 Foxfire Community Association
 Gulf Coast Construction
 Gulf Coast Runners
 Hazelden Florida
 Industrial Equities, L.L.P.
 Lilly Pulitzer
 Marilyn's Distinctive European Designs
 The Private Client Reserve of U.S. Bank
 Ritz-Carlton Naples
 The Stephens Group, UBS Private
 Wealth Management
 Stonegate Bank
 Waterside Shops
 Wells Fargo Private Banking
 Woods, Weidenmiller, Michetti & Rudnick, P.L.

GRANT PARTNERS

Collier County Housing, Human Services
 and Veteran Services
 Community Foundation of Collier County
 Department of Children and Families
 Housing and Urban Development (HUD)
 Harmon-Meek Gallery Fund at the
 SW FL Community Foundation
 Naples Children and Education Foundation
 Naples United Church of Christ
 The Glitter Foundation
 The League Club, Inc.
 The Martin Foundation, Inc.
 The Telford Foundation
 Trinity-by-the-Cove Episcopal Church

COMMUNITY PARTNERS

20th Judicial Court
 Able Academy
 Alienated Grandparents Anonymous
 Ave Maria
 Catholic Charities
 Central Florida Behavioral Health
 Children's Medical Services

Children's Network
 Collier County Health Department
 Collier County Public Schools
 Collier County Sheriff's Office
 Collier Housing Authority
 Collier County Hunger Homeless Coalition
 County Probation
 Bala Vinyasa Yoga
 Boys and Girls Club
 Department of Juvenile Justice
 Drug Free Collier
 Experience Works
 Florida Department of Corrections
 Florida Gulf Coast University
 Florida Mental Health Institute
 Florida Partners in Crisis
 Florida State University
 Lorenzo Walker Institute of Technology
 Goodwill of Southwest Florida
 Grace Place
 Healthcare Network of Southwest Florida
 Hodges University
 Hope By Song
 Lutheran Services
 Mental Health Association
 Naples Art Association
 Naples Children and Education Foundation
 Naples Community Hospital
 Naples Police Department
 Naples Equestrian Challenge
 National Alliance for the Mentally Ill
 Neighborhood Health Clinic
 Pace Center for Girls
 Park Royal Hospital
 PAWS Assistance Dogs
 Physicians Regional Medical Center
 Public Defender's Office
 Sara Ann Drop In Center
 SalusCare
 Shelter for Abused Women and Children
 Southwest Florida State College
 St. Matthew's House
 State Attorney's Office
 Youth Haven

- A** RANI BAHADUR, MARILYN HELLMAN
- B** FIRST ROW: BONNIE FREDEEN, ELENA REYES, MARIBEL RIVERA, EMILY PTASZEK, KATHRYN HUNTER, DOUG JOHNSON, ALMA LITTLES. SECOND ROW: LARRY PHILLIPS, DANIEL MENDOZA, JAVIER ROSADO, LT. GEORGE WELCH, MIKE ELLIS, SCOTT BURGESS
- C** SCOTT BURGESS, CARYN BUECHEL, TOM UTTLEY
- D** LAUREN MICHETTI, RENAE WAYLAND, JIM WAYLAND, MICHAEL MICHETTI
- E** ROBIN AND PAT STRANAHAN, MICHELLE BROWN
- F** DANIEL AND BRENDA MENDOZA, SUSAN STIELOW



DONORS

Annual Giving

CHAIRMAN CIRCLE - \$100,000 +
Mr. and Mrs. Pat Stranahan

GRAND LEADERSHIP CIRCLE - \$20,000 +

Arthrex, Inc.
Mr. and Mrs. Arthur L. Cherry, Jr.
Dr. and Mrs. Douglas Johnson
Mr. and Mrs. Ralph E. Miesel
Mr. Jerry F. Nichols
Mr. and Mrs. Richard Pitbladdo
Mr. and Mrs. Bill Sanford
Mr. and Mrs. Jimmy Stout

LEADERSHIP CIRCLE - \$10,000 +

Ms. Caryn Hacker-Buechel and
Dr. Frederick Buechel, Sr.
Mr. and Mrs. Dave Copham
Mr. and Mrs. Steve Fishman
Mr. and Mrs. William Kassling
Ms. Sue Lennane
Mary E. Dooner Foundation, Inc.
Mr. Denis M. McCarthy
Mr. and Mrs. Ronald J. McGinty
Mr. and Mrs. Bob F. O'Brien
Mr. and Mrs. Stanley A. Star
Mr. Kermit S. and Mrs. Jenny
W. Sutton
The Peggy Meyerhoff Pearlstone
Foundation, Inc.
Mr. and Mrs. Donald C. Weeden
Ms. Carol A. Williamson

GRAND BENEFACTOR - \$5,000 +

Mr. and Mrs. Richard A. Bathey
Mr. and Mrs. Michael Benson
Branch Banking & Trust Company
(BB&T)
Mr. and Mrs. Bob Champion
Mr. and Mrs. Vernon Davidson
Mr. and Mrs. Jack Fingersh
Mrs. Frank H. Galeana
Galliford-Mullard Foundation
Gulf Coast Construction
Ms. Beverly J. Haas
Mr. and Mrs. Chuck Hallberg
Mr. and Mrs. Fred Hawkins
Hazelden Betty Ford Foundation
Ms. Sara Jackson
Mr. and Mrs. Dave Johnson
Mr. and Mrs. John D. Kempfer
Mr. John Levy & Mrs. Gail Rothenberg
Mr. and Mrs. Iqbal Mamdani
Mr. and Mrs. Sean Mayo
Naples Woman's Club
Mr. and Mrs. Douglas Plourde
Mr. and Mrs. David Ross
Mr. and Mrs. Tom Sloan
Mr. and Mrs. Larry Smith
Stonegate Bank
The Stephens Group - UBS Private
Wealth Management
Dr. and Mrs. Tom Uttley
Wells Fargo Private Bank
Mr. and Mrs. David Wilson
Woods, Weidenmiller, Michetti &
Rudnick, P.L.

BENEFACTOR - \$2,500 +

Mr. and Dr. Robert Bernstein
Mr. and Mrs. Terry Bork
Mr. J. Richard Briscoe
Brown & Brown Benefits



A



B



C



D



F



E



G



H



I



J



Mr. and Mrs. Thomas C. Committee
Mr. and Mrs. John Cooney
Mr. and Mrs. Andrew Deane
Florida Blue
Mr. and Mrs. Jim Forbes
Foxfire Community Association
Mr. and Mrs. David T. Gibbons
Mr. and Mrs. Tate Haire
Mr. and Mrs. Marshall Hanno
Industrial Equities, L.L.P.
Joan K. Slocum Foundation
Mr. Eugene A. Leinroth, Jr.
Mr. Felix Lluberer
Dr. and Mrs. Brent Lovett
Mr. and Mrs. Craig Manchen
Marilyn's Distinctive European Designs
Dr. and Mrs. Michael Michetti, Sr.
Mr. and Mrs. Jason Mitchell
Ms. Marsha Murphy and
Dr. Robert Morantz
Naples Art, Antique & Jewelry
Show, Inc.
Dr. and Mrs. Paul Neuharth
Ms. Sonya Sawyer
Mr. and Mrs. Brad Schrier
Ms. LaDonna Smith and
Mr. Mike Bernsen
The Glitter Foundation
The Private Client Reserve
of U.S. Bank
Mr. and Mrs. Ron Torres
Mr. and Mrs. Sam Trivas
Mr. and Mrs. Jim Wayland
Ms. Nancy Wyckoff

PACESETTER - \$1,000 +

A. Jaron Fine Jewelry
Mrs. Virginia J. Ackerman
Mr. and Mrs. Fabrizio Aielli
Mr. and Mrs. Stephen Allman
Anonymous
Big Lots
Mr. and Mrs. Stanley C. Bodell
Ms. Robyn Bonaquist
Mr. and Mrs. Art Bookbinder
Mr. and Mrs. Ronald L. Brown
Mr. and Mrs. Scott Burgess
Ms. Nancy Chellevoid
Community Foundation of
Collier County
Mr. David G. Contreras, Jr.
Mr. and Mrs. Henry Dinardo
Mr. and Mrs. Thomas F. Doyle
Mr. and Mrs. David R. Drobis
Mr. and Mrs. Hugo DuPreez
First Class Plumbing
Mr. and Mrs. Franklin H. Fischer
Mrs. Lillian Fisher
Mr. and Mrs. Peter Fortune
Dr. L. Patt Franciosi
Mr. and Mrs. Carl Fredeen
Mr. and Mrs. Walter Galliford
Mr. and Mrs. Scott Geltemeyer
Goldman Sachs & Co.
Mr. and Mrs. Peter Gomez
Mr. and Mrs. Thomas R. Grady
Mr. and Mrs. Hunter Grant
Mr. and Mrs. Michael Grimm
Gulf Coast Runners Club, Inc.
Mr. and Mrs. Kevin Hale
Halstatt Management Co. LLC
Mr. Harry Hammerly
Dr. and Mrs. Raymond Hausbeck
Mr. and Mrs. Peter Hayes
Mr. and Mrs. Michael Herrera
Ms. Alessandra Higgs
Iberia Bank
J.R. Evans Engineering

Mr. and Mrs. Gary L. Jaarda
Mr. and Mrs. Craig Jilk
John R. Wood, Inc.
Joseph Wendt Custom Clothiers
Mrs. Polly N. Keller
Kohn-Joseloff Foundation
Mr. and Mrs. Rickey Lamitie
Mr. and Mrs. Mike Lancellot
Mr. and Mrs. Bruce Lang
Mr. and Mrs. Ken Levitt
Lilly Pulitzer
Mr. and Mrs. Richard MacKay
Mr. and Mrs. Terry Marrs
Mrs. Janet W. Martin
Mr. and Mrs. Brian McAvoyn
Mr. and Mrs. Dan McCaw
Mr. and Mrs. George McLaughlin
Dr. and Mrs. Robert J. Meli
Mr. Daniel A. Mendoza
Mr. and Mrs. Larry Meuers
Dr. Stuart Meyers
Mr. and Mrs. Dave Mills
Mr. and Mrs. Cap Mona
Dr. and Mrs. Charles J. Montgomery
Mr. Hendrik Morelisse
Mr. and Mrs. Al Moretti
Mr. and Mrs. Ronald Morey
Mrs. Linda Morley
Mr. Stephen P. Mosling
Mutual of Omaha Bank
NCH Healthcare System
Northern Trust Bank
Mr. William A. Onderdonk
Mr. and Mrs. William O'Neill
Mr. Robert C. Parker
Raymond R. and Martha G. Wernig
Foundation, Inc.

Mr. and Mrs. Derrick Romine
Mrs. Maureen Russell and
Mr. Anthony Prestifilippo
Dr. and Mrs. George L. Schrenk
Mr. and Mrs. Donald Sheehy
Mr. James Simon
Lesley and Andy Smith
Mrs. John Stielow
The Edward A. & Catherine
L. Lozick Foundation
Mr. and Mrs. Rich Townsend
Mr. and Mrs. Alan Vail
Mr. and Mrs. James Warnken
Waterside Shops
Mr. and Mrs. Henry B. Watkins, III
Mr. and Mrs. Casey Weidenmiller
Mr. and Mrs. Steve Wheeler
Mrs. Nancy White
Dr. and Mrs. Bernd Wunderer
Mr. and Mrs. Jim Zandlo

DONOR - \$500 +

Mr. and Mrs. Bill Ammann
Mr. and Mrs. Randy Antik
Mr. and Mrs. Michael Arthur
Father and Mrs. Michael Basden
Mr. and Mrs. Douglas H. Bathey
Mr. Michael Broyles
C.E. Brehm Foundation
Mr. Ed Calkins

A ROBIN STRANAHAN, ELIZABETH STAR
B WILLIAM JARON, CAROLINE COFFEY, AMANDA JARON,
AARON LAPP, SCOTT BURGESS, KAY BORK, MARAN
LAPP, JOANNA LAPP, BONITA PEREZ JAY
C CYNDY AND JIMMY STOUT AND GRANDCHILD
D GORDON KELLAM, KELLY VICTOR, JASON STEPHENS
E KATHLEEN MAIER, BONNIE FREDEEN, LEE KRAUS,
DEBI MCINNIS
F ROCIO DIBELLA, RICKY LAMITIE

Campbell Family Foundation
Mr. and Mrs. Trent Carter
Mr. and Mrs. Nicholas Chabraja
Mr. Richard Cipolla
Mr. Justin Collins
Mr. and Mrs. James S. Crane
Cummings & Lockwood, LLC
Mr. Philip DeBiasi
Mrs. Nancy Dewey
Mr. James P. Dunn
eBella, Inc.
Mrs. Betty Lee Gates
Mr. and Mrs. Duane Gengler
Gulfshore Insurance, Inc.
Mr. and Mrs. Scot T. Hamilton
Ms. Marlene M. Hauk
Ms. Harriet Hubbell
Mr. and Mrs. Roger Joslin
Mr. and Mrs. Joshua Kae
Mr. and Mrs. Sean Kenny
Mr. and Mrs. T.J. Kukk
Mr. and Mrs. Dave Loden
Mr. and Mrs. Thomas J. Meister
Ms. Lili Montes
Mr. and Mrs. Charles P. Morel
Mr. and Mrs. John J. Morgan, Jr.
Mr. and Mrs. Michael H. Morris
Mr. Tim S. Nash
Ms. Wendy B. Payton
Mr. and Mrs. Rick Phillips
Ms. GERALYN POLETTI
Mrs. Sue Rapanos
Mr. and Mrs. William J. Reynolds
Mr. and Mrs. Charles C. Rieger, Jr.
Ms. Linda Rieland
Mr. and Mrs. David Schimmel
Ms. Roz Travis
Mr. Jason Trochessett
Mr. and Mrs. Dennis Turner
Mr. and Mrs. Rodney Woods

SUPPORTER - \$100 +

Mr. and Mrs. Marcelo Alvarez
Mr. and Mrs. Bob Anderson
Mr. Stan Applebaum
Mrs. Ivette Arroyo
Mr. and Mrs. John M. Beeman
Mr. Paul G. Benedum, Jr.
Dr. and Mrs. Jaye Benjamin
Mr. Bradley Benson
Mr. and Mrs. George C. Bergland
Mrs. Monica Biondo
Mr. Gary Boivin
Ms. Trisha Borges
Mrs. Sharie Boscaglia
Mr. and Mrs. Curtis A. Botko
Mr. Jared Brancazio
Mr. and Mrs. Vincent Branda
Mr. and Mrs. Beirne Brown
Ms. Emily K. Bua
Mr. and Mrs. James D. Burkett
Mr. and Mrs. Reg Buxton
Dr. and Mrs. Joe M. Campoamor
Mr. and Mrs. Arthur Campbell
Ms. Rita Carlin
Mr. and Mrs. Douglas Carpenter
Ms. Patricia Carpenter

Mr. Ryan Carter
Mr. and Mrs. Carleton Case
Mr. and Mrs. Daniel Ciecko
Ms. Priscilla Clay
Mr. and Mrs. Clay W. Cone
Mr. Michael Cordone
Dr. Mrs. R. William Cornell
Ms. Colleen Crandall
Mrs. Nancy Dauphinais
Mr. and Mrs. Dave DuPont
Ms. Allison Durian
Dr. and Mrs. Hulusi Ergun
Ms. Mary M. Evans
Ms. Judith Finkle
Mr. and Mrs. Ken Finn
Ms. Anne Fleming
Mr. and Mrs. Patrick Flinn
Mr. Jonathan Foerster
Dr. Frank Fontana
Mrs. Marion T. Forte
Ms. Sandra Friend
Ms. Gail A. Gates
Mr. and Mrs. Jim Gburek
Mr. and Mrs. Peter I. Georgeson
Mr. and Mrs. Bill F. Glaser
Ms. Terry N. Gorant
Mr. and Mrs. Thomas Graney
Ms. Amy Gregory
Dr. and Mrs. Lloyd Hagedorn
Dr. and Mrs. James N. Hampton
Mr. and Mrs. Richard R. Harshman
Ms. Nancilee Hartnett
Mr. Bradley Heiges
Mr. Gregory Hunt
Ms. Doris J. Hunt
Mr. and Mrs. William H. Hyland
Mr. and Mrs. James D. Jessee
Mr. Brett Jones
Mr. Ron Katz and Ms. Cheryl Coleman
Mr. and Mrs. Shaun Kelly
Mr. and Mrs. Gerald Kerr
Mr. Ryan King
Ms. Marcea Kjerвик
Mr. Fred Klaucke
Mr. and Mrs. George Kleb
Ms. Valerie Klosterman
Mr. and Mrs. John Koffel
Dr. and Mrs. Paul Kohlepp
Mr. Alan R. Korest and
Ms. Dolly Bodick
Mr. and Mrs. Jim LaFond
Mr. and Mrs. Mike Lapidus
Mr. Alfon W. Larson
Mr. and Mrs. Ned C. Lautenbach
Mr. David Legus
Ms. Natalie Lidow
Mr. and Mrs. Fred L. Lifton
Ms. Jennifer Longley
Ms. Marlene D. Magnost
The Honorable Janeice T. Martin
Ms. Deborah Martin
Mr. Bruce McAndrews
Ms. Kristine Meek
Ms. Juliana Meek
Mr. and Mrs. William C. Merritt
Mr. Martin Metodiev
Mrs. Janice Millard

G LYSIELLE AND JACQUES CARIOT
H ELIZABETH SIMPSON, REINA LOMBARDI, A'LLAWNA
FLORENCE, AIMEE SCHLEHR, KRISTINE MEEK,
WILLIAM MEEK, JULIANA MEEK, SCOTT BURGESS,
BARBARA MEEK, CHLOE KAHN, VICTORIA SIMPSON,
COREY JONES, ANGEL DUNCAN
I CARYN BUECHEL, ANDREA DEANE
J GAREN AND SHARI STAGLIN, DAVID AND PAT GIBBONS



thank you

The Honorable and Mrs. Daniel R. Monaco
Ms. Kylen Moran
Mr. and Mrs. Craig S. Morgan
Ms. Patricia Moseley
Mr. and Mrs. Luis Naranjo
Mr. and Mrs. Ryan Needler
Mr. Gary G. Newman
Ms. Varick Niles
Ms. Cristal O'Meara
Oracle Matching Gifts Program
Dr. and Mrs. C. Authur Pearson
Ms. Maureen Pedrick
Mr. Jason Phillips
Ms. Susan Phillips
Precision Collision of Naples LLC
Publix Super Markets Charities, Inc.
Mrs. Marjorie Renfroe
Ms. Caroline Ridgway
Mr. Jim Riegel
Ms. Kathy Ripin
Ms. Colby Robertson
Mr. Scott Robertson
Mr. and Mrs. Al Rohrstaff
Mr. and Mrs. Stanley Rose
Mr. and Mrs. Sam Saad
Mr. and Mrs. Michel Saadeh
Mr. Shamit Sarangi
Mr. and Mrs. Aurel F. Sarosdy
Ms. Doris Schneider
Ms. Rachel Schutt
Mr. Jason Schwartz
Ms. Shanna Short
Mr. and Mrs. Walter J. Smith
Mr. and Mrs. Edmund H. Sorenson
Ms. Barbara Stanton
Mr. and Mrs. Edgar Starns
Mr. and Mrs. Tom Sully
Mr. Matt Sutton
Ms. Patricia S. Swensrud
Mr. James R. Taylor
Mr. Joseph Tornincaso
Mr. and Mrs. Bob Trombino
Ms. Phyllis Vandermark
Mr. George Vega, Jr.
Mr. and Mrs. Charles H. Vogt
Mr. and Mrs. William Vonier
Mr. and Mrs. William Weber
Mr. Douglas R. Westphal
Where Should We Eat LLC
Mr. and Mrs. Edwin Williams
Mr. and Mrs. Peter H. Wranik

GIFT-IN-KIND DONORS

GRAND LEADERSHIP CIRCLE \$20,000 +

Vineyards Development &
Country Club
Waterside Shops

LEADERSHIP CIRCLE - \$10,000 +

Gulfshore Life Magazine
Yamron Jewelers

GRAND BENEFACTOR - \$5,000 +

Florida Weekly
Jeffrey Private Jeweler

BENEFACTOR - \$2,500 +

CRAVE Culinaire by
Chef Brian Roland
Elevee Fine Clothing
Fresh
Hamilton Harbor Yacht Club
Joseph Wendt Custom Clothings
Mr. and Mrs. Charles M. Kelly, Jr.
Naples Air, Inc.
Naples Wine Collection
Service by Jordan
Steinway Piano Gallery

PACESETTER - \$1,000

A Mano
Mr. and Mrs. Terry Bork
Ms. Caryn Hacker-Buechel and
Dr. Frederick Buechel, Sr.
Buttercup Studio
Carlson's Fine Jewelry
Image and Marketing Associates
Marilyn's Distinctive European
Designs
Mr. and Mrs. Bob F. O'Brien

DONOR - \$500 +

A. Jaron Fine Jewelry
Alexander's Restaurant
All About Smiles
Bellasera
Mr. and Mrs. Arthur L. Cherry, Jr.
Club at Old Cypress
Culinary Concepts
Mr. Jerry Greenfield
Mr. and Mrs. Chuck Hallberg
Mr. and Mrs. Peter Hayes
HobNob
LaPlaya Beach & Golf Resort
Maus & Hoffman
Mr. Big Fish
Naples Grande Golf Club
Mr. and Mrs. Harold Oldak
Randa Accessories
Sea Excursions, Inc.
The Naples Beach Hotel & Golf Club
The Ritz-Carlton Naples
The Squeegee Squad
Tommy Bahama
Dr. and Mrs. Tom Uttley
Wilkinson Photography, Inc.
Ms. Carol A. Williamson

SUPPORTER - \$100 +

Aesthetic Plastic Surgery of Naples
American Bistro
Bala Vinyasa Yoga
Barbatella
Bowland
BR uno
Brahmin Leather Works
Butterflies & Fireworks
Camuto Group
Casanova Boutique
Chez Boet
Clean & Healthy Cooking with Chris
DeLuca
Cottontails
D'Amici Salon & Spa
Diamond Limousine
Diane's Fine Fashions
Donna Karan International

Driftwood Garden Center
Fish & Mira Mare Restaurants
Fleming's Prime Steakhouse
Grey Oaks Country Club
Harley Davidson of Naples
Hideout Golf Club
Hilton Naples
Hollywood Fashion Secrets
Iron Tribe Fitness
Itochu Prominent
J. McLaughlin
Kahn Design Group
Kari's Kreations
Kay's on the Beach
Key West Express
Leggiadro of Naples
Lilly Pulitzer
Llenocos Hair Studio
M Waterfront Grille
Marcus Daniel Tobacconist
Marla Ottenstein, Professional
Organizer Florida
Mr. and Mrs. Ronald J. McGinty
Mr. Daniel A. Mendoza
Mr. and Mrs. Al Moretti
Naples Bay Resort
Naples Botanical Garden, Inc.
Naples Sailing & Yacht Club
Naples Zoo
Olde Naples Chocolate
Olde Naples Surf Shop
Pamela Durkin Designs
Physicians Regional Healthcare
System
Platinum Total Fabricare
Ridgway Bar & Grill
Robert of Philadelphia Hair Design
Rudd Wines
SCUBA Adventures
Sea Salt Restaurant
The Mane Escape
The Golisano Children's Museum
Of Naples
The Sly Fox Inc.
TheatreZone, Inc.
Turtle Club Restaurant
Unique Boutique
Van Buskirk Opticians
Veranda E / Hotel Escalante
Waldorf Astoria Naples
Whispers of Naples
Wyndham Garden Hotel
Wynn's Market
Zoom Tan

ENCORE DONORS

GRAND BENEFACTOR - \$5,000 +

BR uno
Barbara Bucy
Marge Heimburger
John and Charlie Miller (Freund
Estate)
Marck and Edward Van Boven

BENEFACTORS - \$2,500 +

Stephen Bennett
Bonnie Fredeen
Joan and Mike Hopke
Polly Keller
Russ and Sue Mayer
Mrs. Voss
Ann Wise

PACESETTER - \$1,000 +

Rick Accordino
Maria Aitken
Rena Berry

Sara Bielecki
Scott and Renae Burgess
Karen Carey
Sandra Diedrich
Deborah Donnelly
Greg Eastman
Catherine Fay
Jan and Brian Flanagan
Paul Freeman
Sheila Grant
Hilton Naples
Pat Jones
Melinda Kingery
Patricia Kipp
Louis LaBash
Jack Lanners
Aaron Lapp
Le Ciet Venetian Tower
John and Carol Madden
Sally Masters
Trista Meister
Mary Pat Peterson
Susan Richmond
Shoolman 2000 Trust
Richard Smith
Deborah Talbot
John Tumaneng
William Twohig
Bob Ward
Michelle Wilson
Ann Wise
Marianne Woods

DONOR - \$500 +

Pat Balcerzak
Karen Balzano
Barbara Beyer
Colleen Bolligan
Arthur Campbell
Jan and Brian Carlson
Brittany Chase
Art and Beverly Cherry
Paula Cooper
Debbie Dean
Patricia Dietrich
Lorelei Drummond
Lois Duncan
Diane Ebert
Dale Fiarhurst
Mary Fitzpatrick
Linnea Fleishour
Linda Godkowski
Chase Grimes
Robin Harris
Jack Heckert
Bonnie Heidel
Shanna Helfang
Santina Holdeman
Patty Innamocan
Doug Johnston
Joyce Justice
Nancy Krantz
Phyllis Lazear
Anita Lee
Robert Levert
Mike Lyon
Arnold Malarz
Min Mans
Leo Marino
Harriet Matz
Sue McDonald
Larry McDowell
Sara Mielecki
Diana Moore
Linda Mullen
Timothy Nash
George Neilson
Cheryl Nejmam



VOLUNTEERS

AMBASSADORSHIP COMMITTEE

Newt Barrett
Caryn Buechel
Maribel De Armas
Catherine Fay
Shelley Hobbs
Joe Landon
Colby Robertson
Shanna Short
Cyndee Woolley

DAVID LAWRENCE CENTER YOUNG EXECUTIVES

Matt Sutton
Chairman

Rachel Barlow
Phil DeBiasi
Allison Durian
Rob Edwards
Irene Zamora Garcia
Lusy Garcia
Amy Gregory
Kelly Gregory
Tyler McMackin
Emily Naranjo
Tim Nash
Ryan Needler
Colby Robertson
Shanna Short
Chelsea Wagner

ENCORE ADVISORY COMMITTEE

Pat Barton
Catherine Fay
Polly Keller
Nancy Wyckoff

GALA COMMITTEE

Caryn Buechel
Co-Chair

Amanda Jaron
Co-Chair
Ingrid Aielli

Jacqui Aizenshtat
Michelle Anderson
Susan Baines
Kay Bork
Michelle Brown
Lysielle and Jacques Cariot
Bev Cherry
Bruno Dhaine
Pamela Durkin
Pella Fingersh
Jenny Haire
Robin Hamilton
Marie Hayes
Marilyn Hellman
Amanda Jaron
Kathleen Karpovich
Polly Keller
Jerry Kraft
Sue Lennane
Diane McGinty
Patti Miesel
Christina Moretti
Nancy Moylan
Susan Pohlman
Caroline Ridgway
Kathryn Rieger
Maureen Russell
Gwyn Sanford
Candice Sebring-Kelber
Paige Simpson
LaDonna Smith
Elizabeth Star
Susan Stielow
Robin Stranahan
Jenny Sutton
Kathy Vail
Valerie Weidenmiller
Lane Wilkinson
Nancy Wyckoff

PLANNED GIVING COMMITTEE

Mary Beth Crawford
Chairman

Sander Bleustein
Preston Came
Art Cherry

Kimberly Dillon
Mary Feider
Jason Stephens

SPIRITUALITY COMMITTEE

Rick Baldwin
Estrella Espinosa
Jose Espinosa
Ann Grandell
Steve Hayes
Jack McCorkle
Marie Moxam
Fr. Philemon Patitsas
John Rogers
Gabriel Santiago
Tommy Sloan

VOLUNTEERS

Jean Bellezzo
Timothy Chase
Alec Chierci
Terry Cox
Jim Devine
Carol Dinwiddie
Catherine Fay
Richard Griffiths
Narvell Hecathorn
Adam Janowski
William Kay
Desiree Kelly
Carol Kirchdorfer
Deirdre Lapp
Bruce McAndrews
Ed McCann
George Mencke
Jordan Moreno
Terry O'Connell
Mike Ortutay
Frank Palowitz
Vivian Parziale
Sue Rapanos
Bobby Rhodes
Gary Stein*
Douglas Valentine

*In memoriam

Doug Noonan
Risa Pascal
Pat Quessy
Lyn Reddy
Janet Rees
Kristy Richardson
Dorothy Robicheau
Jasand Ross
Linda Russell
Diane Ryan

Joseph Savino
Amy Sehing
Debbie Selvia
Lisa Sieron
Jennifer Smith
Bonnie Spilker
Leo Stadt
Kathy Stott
Ann Swope
Tim Toole

Nancy Trail
Connie Troop
Tanya Tyndall
Tony Vack
George Vega
Carol Vogel
Amedia Bryne Williams
Penny Wilson
Andrew Wyszkowski

- A** TISH KELLEY, LYNNE BECKER, POLLY KELLER
B EMILY BUA, AMANDA JARON, L. PATT AND TOM SCHNEIDER
C KAITLYN MIDNET, ROB EDWARDS, PHILIP DEBIASI, TIM NASH, LUSY GARCIA, SHANNA SHORT, ALLISON DURIAN, ALEX AND JOHN BREAUULT
D DANIELA AND RYAN NEEDLER, CHRISTY AND SHAMIT SARANGI
E BILL GONSALVES, JEANNIE BATES, VIVIAN PARZIALE, SCOTT BURGESS, DEBORAH JOHNSON, DAVE LEVESQUE, BOB CARNEY

All gifts above \$100 made between June 1, 2013 - June 30, 2014 are listed here. Encore donations that sold for more than \$500 are listed. Consignment items are not included.



A



B



C



D



E

H O P E

Locations



DAVID LAWRENCE CENTER

Restoring & Rebuilding Lives

CALL 239-455-8500

DavidLawrenceCenter.org



MAIN CAMPUS

6075 Bathey Lane
Naples, FL 34116
Appointments/24-Hour
Emergency Services
239.455.8500

CHILD'S PATH PRESCHOOL

3144 Santa Barbara Boulevard
Naples, FL 34116
239.353.4144
ChildsPath.org

IMMOKALEE SATELLITE SERVICES

425 North First Street
Immokalee, FL 34142
239.657.4434

CROSSROADS

6075 Bathey Lane, D-3
Naples, FL 34116
239.354.1428
CrossroadsNaples.org

HORSESHOE DRIVE SATELLITE SERVICES

2806 South Horseshoe Drive
Naples, FL 34104
239.263.4013

ENCORE RESALE SHOP

3105 Davis Boulevard
Naples, FL 34104
239.775.0032
EncoreResale.org

