



The Newsletter of David Lawrence Center

CENTERED

● **NEW STATE-OF-THE-ART
CRISIS STABILIZATION
UNIT SCHEDULED TO
OPEN NEXT MONTH**



ARTISTS RENDERING OF THE DAVID LAWRENCE CENTER'S NEW CRISIS STABILIZATION UNIT

The opportunity to save a life can be fleeting. If someone is suffering from suicidal thoughts, addiction, abuse or psychosis, he or she should not be told to wait to seek treatment.

Yet last year at the David Lawrence Center's Crisis Stabilization Unit, 600 people were sent out of the county due to lack of space. And, on average, 10 people every day waited in hospital emergency rooms for admission.

But today, there's great news. A new Crisis Stabilization Unit, funded by \$5 million in donations from our supporters, is opening in November. Immediately, our capability to meet the critical mental health needs of our community will double, with room to expand in the future as community needs require.

"Our ability to create life-changing wellness has been greatly enhanced by this vital new facility."

— DAVID SCHIMMEL, DLC CEO

The inpatient care facility has expanded the capacity to 36 beds and accommodates children and adults who pose a danger to themselves or others. Encompassing 16,000 square feet of new and renovated space, the new building includes a new, private, state-of-the-art therapeutic environment with larger common areas, private dining rooms, additional treatment space and a serene interior design. Facility improvements include better efficiency, workflow, security, technology, auxiliary power and safety enhancements.

For patients and staff alike, it is a new day at the David Lawrence Center, where our ability to create life-changing wellness for individuals in crisis in our community has been greatly enhanced by this vital new facility. ***Please join us for the grand opening celebration on November 1, 2012 from 4:00 - 6:00 p.m. at David Lawrence Center Polly Keller Campus, 6075 Bathey Lane, Building B-3. To RSVP please call 239-354-1422.***

Inside

- 1 NEW CRISIS STABILIZATION UNIT OPENING
- 2 SUCCESS STORY & PROGRAM NEWS
- 3 SPECIAL EVENTS & FACT
- 4 VOLUNTEER FEATURE & GRANT NEWS
- 5 DONOR FEATURE
- 6 PLANNED GIVING
- 7 ISSUES AND ANSWERS & CENTER NEWS
- 8 ENCORE NEWS



**DAVID LAWRENCE
FOUNDATION
BOARD OF TRUSTEES
2012-2013**

Stephen Wheeler
Chief Development Officer

Michael Benson
Chairman

Art Cherry
Mary Beth Crawford
Kevin Hale
Sharon Kenny
George Leamon
Daniel Mendoza
Gail K. Neuharth
William O'Neill
David Schimmel
Elizabeth Star
Robin Stranahan
John Vega, Esq.
Christine Williamson

**DAVID LAWRENCE CENTER
BOARD OF DIRECTORS
2012-2013**

David Schimmel
Chief Executive Officer

John Gast, Esq.
President

Michael Benson
James Burkett
Catherine Fay
Jack Fingersh, Esq.
L. Patt Franciosi, Ph.D.
Caryn Hacker-Buechel
Douglas Johnson, Ph.D.
Brian V. McAvoy, Esq.
Daniel R. Monaco, Esq.
Robert Morantz, M.D.
Richard Rice
Edward Sheridan, Ph.D.
Kelly Townsend
Pablo X. Veintimilla
James Warnken
George Welch

David Lawrence Center is a not-for-profit, 501(c)(3) organization and is accredited by the Joint Commission on Accreditation of Healthcare Organizations. The Center is funded in part by the State of Florida Department of Children and Families (DCF) and the Department of Housing and Urban Development (HUD), Collier County Department of Housing, Human and Veteran Services, and private donations made through the fundraising efforts of the David Lawrence Foundation.



SUCCESS STORY

"David Lawrence Center helped me be the person I've always wanted to be."

— RANDY, CROSSROADS CLIENT

Randy grew up in an upper middle class family in New York. In his 20's, he landed a corporate job programming for IBM and became successful and bored. He began partying recklessly and got hooked immediately to smoking cocaine. At 26, his family intervened and got him into his first of many treatment programs.

Several years later, the despair Randy felt over his lack of control led him to slit his wrists. He said, "I would go on eight day binges and blow through a ton of money. It makes you psychotic. I was sick of dealing with the drugs and wanted to be put out of my misery." Luckily, his brother found him and had him admitted to a mental health facility.

This pattern continued for the next 20 years as he cycled through bouts of professional success from selling a multimillion software company to landing huge real estate deals. His drug use put him in dangerous, life threatening situations and run ins with the law. He adds, "Addiction is a war against yourself. My ego got in the way of my recovery."

An aspiring author and actor with experience in TV and film, Randy knew he had to get off the streets and get clean if he ever wanted to succeed. He shares, "The crushing realization that I was going to lose my dream, finally made me want to get help."

With a newfound commitment to recovery and a willingness to do whatever it took to stay clean, he was admitted to the DLC Crossroads residential treatment program.

Now Randy is living one day at a time towards his dream. He adds, "It's been life-changing for me. I know I am a miracle. David Lawrence Center helped me be the person I've always wanted to be."

PROGRAM NEWS Volunteer Pet Therapy

Lauren Hutchinson, a local elementary school math teacher, and her two cockapoos Bailey and Bella have volunteered to bring the PAWS for Love Therapy Program to our inpatient programs. The program features an elite group of certified canine companions that are owner handled.

Hutchinson says that what motivates her to generously give back to the community is her son Mathew. Mathew suffered for years from depression, anxiety and drug and alcohol abuse before it ultimately ended his life at the young age of 24.

Hutchinson adds, "Mathew loved Bailey. She was always there for him and never judged. She was also instrumental in helping me through my grief when he



"...the unconditional love that dogs offer can be very therapeutic."

— LAUREN HUTCHINSON

passed." She firmly believes that the unconditional love that dogs offer can be very therapeutic. She adds, "I hope that the clients at DLC will feel that same love from the dogs that he did."

David Lawrence Center SPECIAL EVENTS

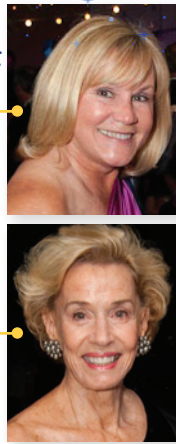


MASQUERADE BALL JANUARY 18, 2013 Presented by IMC, Insurance Management Consultants, LLC

The David Lawrence Foundation's 2013 signature fundraiser, "An Evening in Venice, Masquerade Ball," to be held Friday, January 18th, 2013 at 6:00 p.m. at the Ritz-Carlton Beach Resort will transport guests to the elegance of a 16th century-inspired, baroque Venetian Masquerade Ball, set against the backdrop of the beautiful landscapes of Venice, Italy.

Guests are encouraged to wear classic Venetian masquerade dress, recreating the finery of the Renaissance. This evening of revelry and fantasy will offer dinner, entertainment by Powerhouse, and opportunities to bid on luxurious silent and live auction lots.

Previous years' events have been named the Best Themed Event by Gulfshore Life magazine and one of the Spring Season's most memorable fundraising parties by Naples Illustrated magazine! Tickets are \$500 per person, \$1,200 per VIP patron, and \$10,000 per premier sponsor table of 10.



CHAIRPERSON: **GWYN SANFORD**, HONORARY CHAIR: **POLLY KELLER**

SAVE THE DATE

GULF BALL DECEMBER 8, 2012

DLC Young Executives, a group of professionals who are dedicated to promoting awareness and provide philanthropic support of the mission of the Center, invites fellow philanthropists and professionals to enjoy exquisite cocktails and hors d'oeuvres, a silent auction, and a great atmosphere on the Gulf at their third annual, signature event the "Gulf Ball" to be held December 8, 2012 at 7:00 p.m. at the Naples Beach Hotel. This upscale, casual event is sponsored by Shelia Smith Davis Family Fund, Industrial Equities, LLP and J.P. Morgan and will be an evening of fun, fellowship and fundraising for DLC. Tickets are \$50 per person.



THIRD ON CANVAS FEBRUARY 10, 2013

Each February, more than 40 local, national and internationally acclaimed artists paint in and around the buildings, fountains, plazas, and courtyards of the Third Street South historic district for Third on Canvas. This year the event benefits DLC. Painting days are February 4 and 5 throughout the Third Street South shopping district, Crayton Cove, Palm Cottage and the beach. The Art Auction will be held February 10, 2013 from 5:30 - 8:30 p.m. Wine and passed hors d'oeuvres are served. Tickets to the event are \$125 and \$1,500 per sponsor table of 10.



TRAVEL SHOWCASE FEBRUARY 18, 2013

Preferred Travel of Naples presents "Creating Timeless Travel Memories" – 7th Annual Travel Showcase to benefit the David Lawrence Center children's programs. This year's vintage travel themed event will be held at Club Pelican Bay on February 18, 2013 from 5:00 - 8:00 p.m., and will showcase 44 travel partners from throughout the world that represent the best of the best in luxury and adventure travel. Tickets are \$50 per person.



For additional information or to reserve a ticket to any of these events call (239) 304-3505 or visit DavidLawrenceCenter.org

VOLUNTEER FEATURE

| Kelly Townsend

As a dedicated board member, community advocate, volunteer, international speaker, writer and coach, Kelly Townsend is intent on one thing – results. Moving beyond the traditional work of an executive and corporate coach, she facilitates programs that consistently help organizations achieve stunning breakthroughs while fulfilling their professional aspirations.

Kelly's firm is one of only 60 companies worldwide trained in unique technologies proven to allow companies to break out of their default future, elevating individual and company-wide performance to unprecedented levels. Her 16 years of intense training has provided her with an uncanny ability to help clients see "blind spots" to what is limiting them while empowering them to take their performance to the next level.

Kelly has been a volunteer board member for DLC since 2008 and serves as a member of the Communications and Clinical and Administrative Practices Committees. As she watched the Center spend years planning and managing growth she knew the Center could benefit from her expertise.

And so, last year she began generously coaching DLC on a volunteer basis. To date, she has coached over 140 employees broken into seven small, intimate groups and has committed to train the remaining 140 within the next year. She has invested more than 200 hours to help our organization discover new possibilities, productivity and success. Born out of her efforts are the driving principles in our new charter and a new strategic vision where we see anything as possible. As a result, we are making significant investments in technology, new program development, and facilities in order to provide the best possibility for everyone in need to achieve life-changing wellness.

Kelly's commitment as a volunteer has been humbling and inspirational and the results of her investment are already paying off.



TOP: KELLY TOWNSEND STANDING NEAR THE CHARTER. LEFT: EXCELLENCE IN INDUSTRY AWARD – CATHRINE FAY, KELLY TOWNSEND, DAVID SCHIMMEL, PABLO VEINTIMILLA, JIM WARNKEN.

Grant News



League Club Community Trust Fund Grant \$10,000
Funding to purchase a new vehicle to increase access to telemedicine services for underserved, at-risk individuals and families in Immokalee who experience mental health and economic challenges.



Target Early Childhood Reading Grant \$2,000
Funding for the DLC Child's Path Preschool Ready-to-Read Program to increase the number and quality of books and reading readiness materials in English, Spanish, and Creole.

DONOR FEATURE

Bala Vinyasa Yoga Event Benefits DLC



David Lawrence Center Corporate Partner, Bala Vinyasa Yoga, which for the last two years has generously donated weekly yoga classes to clients in the Crossroads residential substance abuse treatment program, participated in the Yoga Aid Challenge, a global fundraising event designed to facilitate yoga communities to come together to practice, share, and give to the world.

Project, David Lawrence Center, and the Miami-based Yoga Gangsters.

We truly value our expanding relationship with Bala Vinyasa, one of our 2011 Recovery Month Honorees. In addition to this fundraising event, this month they launched a second free yoga class now open to anyone in substance abuse recovery in the community. They have generously embraced and invested in our efforts to assure the health and wellbeing of our community. Their commitment and show of support to individuals in substance abuse recovery is inspiring.

“Personal health and wellness – both physical and emotional – makes this program so transformational.”

– DEBI GRILO, INSTRUCTOR

Bala Vinyasa instructor and former David Lawrence Center children’s therapist Debi Grilo, said, “I am so excited about the relationship that Bala Vinyasa Yoga has built with David Lawrence Center. Personal health and wellness – being both physical and emotional – makes this program so transformational. It is a pleasure to support your participants’ growth and recovery because when you shine, you allow others to shine.”

Through this effort they expanded their partnership with us, and chose locally to have the funds benefit the David Lawrence Center. The two-hour, packed class consisted of 108 sun salutations guided by the Bala Vinyasa Team.

The event raised \$2,000 between the studio’s two locations in Naples and Miami to benefit the global Africa Yoga



TOP: JOCELYNN BRUNETT, HEATHER PILLING, LENORE BISHOP; BOTTOM: DANA KLEIN AND ONDINE HEFLEY.



FACT:

In fiscal year 2011-2012, David Lawrence Center touched of the lives 7,403 people through our mental health and substance abuse treatment services, 10,920 contacted us for brief triage, information and referrals and an additional 25,587 were educated about our programs and services through our outreach and prevention activities.

Planned Giving

YEAR END ESTATE PLANNING MADE EASY



SANDER D. BLEUSTEIN, CFP®
PLANNED GIVING COMMITTEE MEMBER

The end of 2012 is quickly approaching and due to the looming changes in the estate tax law, many individuals are updating their estate plans. As part of this process, one of the decisions you face is to what extent you would like to leave wealth to your heirs and benefit charity.

CURRENT ESTATE AND GIFT TAX LAW

The federal government taxes transfers of wealth you make to others, both during your life and at your death. In 2012, the federal gift, estate, and generation-skipping transfer tax is imposed on transfers in excess of \$5,120,000 at a top rate of 35 percent. In 2013, the gift and estate tax exemption will revert to \$1 million and the GST tax exemption will revert to \$1 million adjusted for inflation, with a top rate of 55 percent, unless Congress acts to change that.

CHARITABLE GIFTING

Careful planning is needed to minimize transfer taxes, and charitable giving can play an important role in your estate plan. By leaving money to charity, the full amount of your charitable gift may be deducted from the value of your gift or taxable estate. A few Charitable Gifting strategies to consider are:

OUTRIGHT GIFTS

An outright gift is one that benefits the charity immediately and exclusively. With an outright gift, you get an immediate income and gift tax deduction.

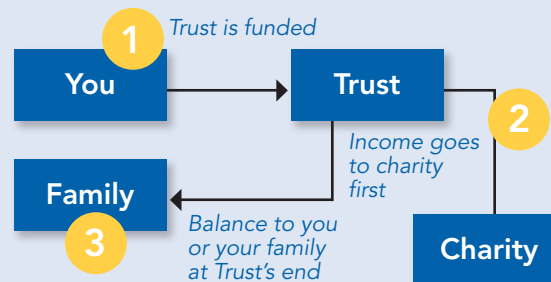
WILL BEQUESTS AND BENEFICIARY DESIGNATIONS

These gifts are made by including a provision in your will, or by designating charity as the beneficiary of your life insurance policies, retirement accounts, and annuities. The charity receives the gift at your death, at which time your estate can take the income and estate tax deductions.

CHARITABLE LEAD ANNUITY TRUST (CLAT)

A Charitable Lead Annuity Trust is a charitable and estate planning technique where the Grantor initially establishes and transfers assets to the trust. The trust can last for a set term of years or the Grantor's lifetime. Each year, an annuity payment is made from the trust to one or more charitable organizations, such as the David Lawrence Foundation. At the conclusion of the trust's term, the remaining trust property is distributed to, or held in further trust, for the non-charitable beneficiaries.

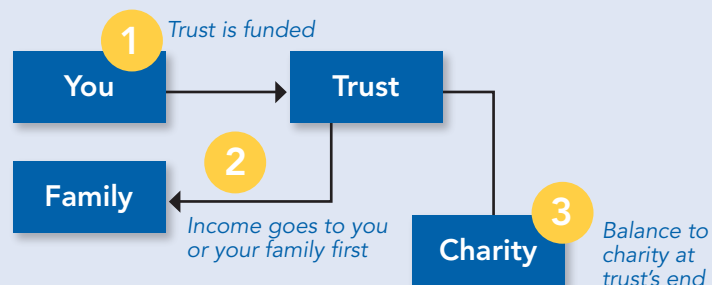
HOW A CHARITABLE LEAD TRUST WORKS



CHARITABLE REMAINDER UNITRUST (CRUT)

A Charitable Remainder Unitrust is a charitable and estate planning technique where a Grantor initially establishes and transfers appreciated assets to the trust. The appreciated assets are typically sold, thus deferring income tax. The trust can last for a set term of years or for the lives of the trust beneficiaries. Each year, the trust distributes the unitrust amount to the beneficiaries (typically the Grantor and their spouse). The unitrust amount is a percentage of the fair market value of the assets of the trust. At the conclusion of the trust's term, the remaining trust property is distributed to one or more charitable organizations, such as the DLC.

HOW A CHARITABLE REMAINDER UNITRUST WORKS



To learn how Charitable Gifts can be incorporated into your estate plan and benefit DLC, call 354-1416.

ISSUES & ANSWERS

About Synthetic Drugs

Since 2008, designer drugs like synthetic marijuana and bath salts have become a growing problem in the United States and are prevalent in Collier County. These drugs are marketed toward young people as a “legal” high. The products are labeled “not for human consumption” to mask their intended purpose and avoid FDA regulatory oversight of the manufacturing process. Over the past few years, lawmakers have attempted to change drug laws with the intent of banning the substances, but manufacturers respond quickly by altering the chemical makeup of the drugs, effectively skirting the law.

Tests for the substances remain limited at best, usually only able to detect a small number of the most popular strands – only 5 out of 400 compounds are currently illegal. That makes the designer drugs popular with people who are expecting to be drug tested. This was eye opening for David Lawrence Center, when the

first drug tests became available in 2010, nearly all participants in the Drug Court program tested positive.

Synthetic marijuana and bath salts products are sold in local stores in packages labeled as plant food, stain remover, or herbal potpourri under brands like K2, Spice, Jazz or Mr. Nice Guy for as little as \$12.99 per packet. Synthetic marijuana consists of plant material that has been laced with substances that mimic THC. Synthetic marijuana is the second most commonly used illicit drug among high school seniors. Nationally, calls to poison control centers have doubled in the last year. At DLC, eight out of every 10 children being treated for substance abuse reports they have tried synthetic marijuana.

Bath salts are meant to mimic cocaine, LSD and methamphetamine. At David Lawrence Center, one out of every 20 children being treated for substance abuse reports they have tried bath salts.



At DLC, eight out of every 10 children being treated for substance abuse reports they have tried synthetic marijuana.

CENTER NEWS

Recovery Month Awards Ceremony Celebrates Voices in Recovery

This September marked the 23rd annual National Recovery Month observance which is designed to celebrate the effectiveness of treatment services and the reality of recovery. This year's national theme, “Join the Voices for Recovery: It's Worth It,” emphasized that while the road to recovery may be difficult, the benefits of preventing and overcoming mental and/or substance use disorders are significant and valuable to individuals, families and communities.

David Lawrence Center celebrated six individuals and organizations for their outstanding contributions to support those in recovery at the Annual Recovery Month Awards Ceremony “Celebrating Voices of Recovery” held last month. Special thanks to our event sponsors St. Matthew's House, the David Lawrence Center Alumni Association and New Hope Event Center.



THOMAS O'CONNOR, M.ED., LMHC, DIRECTOR OF SOCIAL WORK, NAPLES COMMUNITY HOSPITAL; **ALBERT BABLE**, INTAKE COORDINATOR, JUSTIN'S PLACE; **ST. MATTHEW'S HOUSE/JUSTIN PLACE**, ACCEPTED BY **VAN ELLISON**, CEO; **HONORABLE JANEICE MARTIN**, COLLIER COUNTY CIRCUIT COURT JUDGE, MENTAL HEALTH AND DRUG COURT; **NORI ST. PAUL**, FREELANCE WRITER, NAPLES DAILY NEWS CORRESPONDENT, AUTHOR; **BRUCE M. MCANDREWS**, DLC VOLUNTEER AND ALUMNI ASSOCIATION CHAIRPERSON

National
Recovery Month

Prevention Works • Treatment is Effective • People Recover

LOCATIONS

239.455.8500

www.DavidLawrenceCenter.org

MAIN CAMPUS

6075 Bathey Lane
Naples, FL 34116
Appointments/24-Hour
Emergency Services
239.455.8500

IMMOKALEE SATELLITE SERVICES

425 North First Street
Immokalee, FL 34142
239.657.4434

HORSESHOE DRIVE SATELLITE SERVICES

2806 South Horseshoe Drive
Naples, FL 34104
239.263.4013

EMPLOYEE ASSISTANCE SERVICES

3400 Tamiami Trail North
Suite #204
Naples, FL 34103
239.435.0400
www.EASofSWFlorida.com

CHILD'S PATH PRESCHOOL

3144 Santa Barbara Boulevard
Naples, FL 34116
239.353.4144
www.ChildsPath.org

ENCORE RESALE SHOP

3105 Davis Boulevard
Naples, FL 34104
239.775.0032
www.EncoreShops.org



ENCORE NEWS

Amped Up Volunteer Recruitment Efforts Creating Army of Advocates

As DLC embarks on an exciting new future of growth, the Center realized a need to better cultivate volunteers, expand the volunteer team and scope of their work and build an educational component to their orientation in order to create an army of advocates that can help us bring awareness, spread the word of hope, and encourage others to join us in our efforts.

If you are interested in becoming a volunteer, call 776-8337, and plan to join us for the next upcoming orientations on November 19th and January 7th from 10:00 am - 1:00 pm.

This summer we welcomed Maureen Sullivan-Hartung to the team as our new volunteer coordinator. Housed at Encore where the majority of our active, steadfast volunteers work, she's hit the ground running. This month, we held the first Volunteer Orientation Training for our active Encore volunteers – a 3 hour training split into two components – the history of mental illness and substance abuse and an overview of DLC our Encore team was amazing, engaged and they are now more armed than ever to support our mission.



TOP: DAWN GYORKI; MAUREEN SULLIVAN-HARTUNG, VOLUNTEER COORDINATOR; SUE RAPANOS; JEAN MICHALEK; DIANE LYONS; TOM GALLAGHER; DENA VASILION; SOPHIA SMITH; MARV WEISBERG; TERRY O'CONNELL; CHARLENE DAILEY, ENCORE MANAGER; NOBLE RESCIGNO AND BILL KAYE.

MIDDLE: MAUREEN SULLIVAN-HARTUNG, ANGEL CALVELLO, CHARLENE DAILEY, NOBLE RESCIGNO.

BOTTOM: SOPHIA SMITH, DIANE LYONS, CHARLENE DAILEY, SUE RAPANOS.